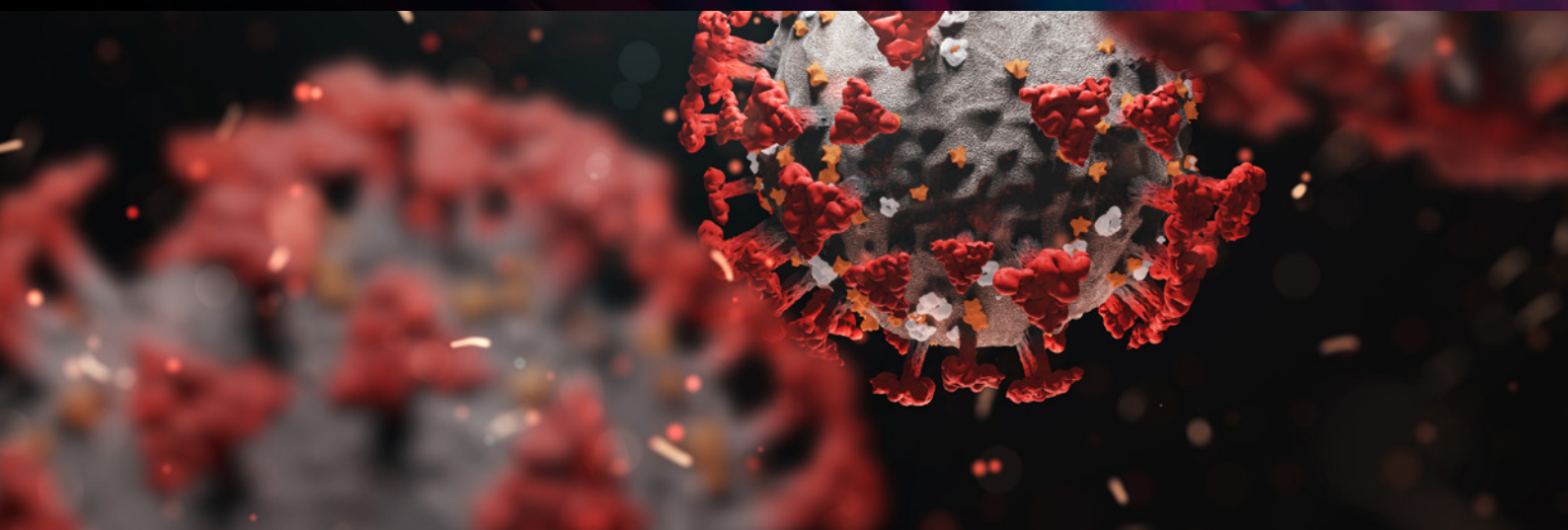


# COVID-19



## Product Syllabus:

- What is COVID-19
- Symptoms
- High-risk groups
- Moderate-risk groups
- Transmission
- Chain of infection
- Incubation period
- Minimising transmission
- Social distancing
- Self-isolation
- Hand hygiene
- Donning PPE
- Doffing PPE
- Infection control procedures
- Waste disposal
- Laundry management
- Treatment
- Recovery
- Long COVID

SOCIAL CARE TV  
ONLINE TRAINING